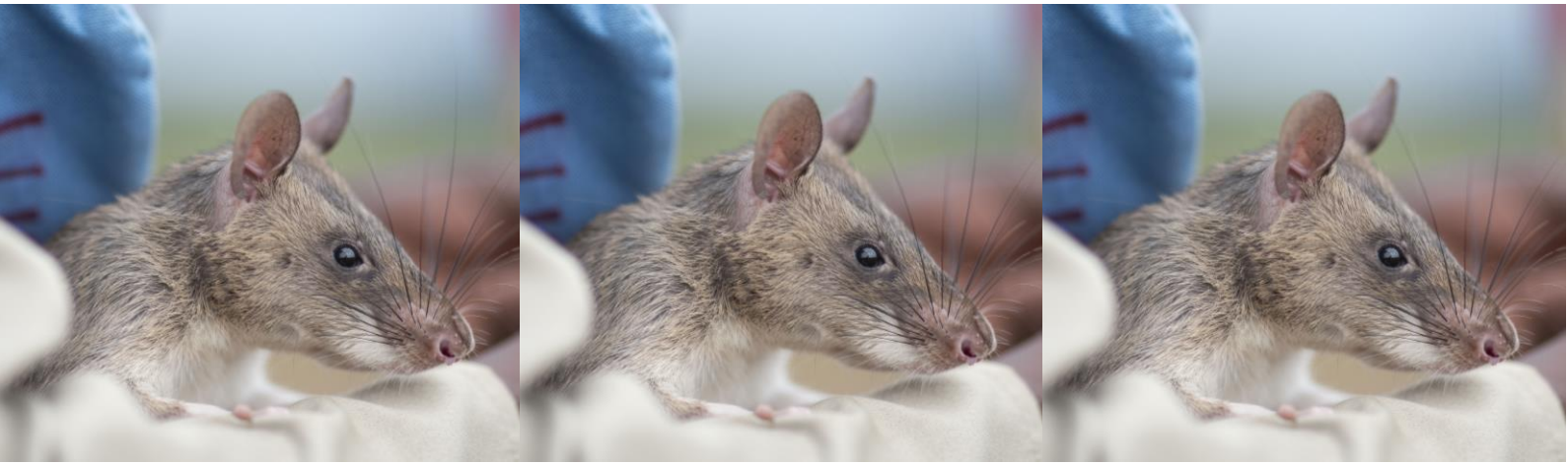




CAMBODIA STUDENT IMPACT EXPERIENCES COMMUNITY - ENVIRONMENT - INNOVATION



A Transformational Learning Experience in Cambodia

Cambodia offers students a rare opportunity to explore real-world challenges and solutions through direct engagement with local communities, environmental initiatives, and humanitarian innovation.

This integrated program brings together three mission-driven organizations - APOPO, Ocean Recovery Alliance, and We Care Cambodia - each offering unique, hands-on experiences that deepen understanding of global issues while fostering empathy, leadership, and cultural exchange.

Through these experiences, students will:

- Explore Cambodia's journey from conflict to recovery
- Engage with communities working toward sustainable futures
- Participate in environmental conservation efforts
- Learn how innovation and collaboration create meaningful impact



HUMANITARIAN INNOVATION WITH APOPO



A Rare Educational Experience

APOPO is an international non-profit that trains animals to address some of the world's most pressing humanitarian challenges - from landmine clearance to tuberculosis detection, wildlife trafficking prevention, and disaster response.

Through a limited number of structured visits each year, APOPO offers student groups the opportunity to go beyond a standard tour and gain **behind-the-scenes insight into real-world humanitarian operations.**

This experience is designed to be **interactive, educational, and inspiring**, providing students with a deeper understanding of how science, technology, and local expertise come together to solve complex global challenges.

Program Overview

This experience is designed as a **half-day to full-day module**, depending on how operators structure their itinerary.

All activities are based in and around **Siem Reap**, with travel times indicated below for planning purposes.



Experience Components

1. APOPO Visitor Centre - Private Educational Session

Location: Siem Reap

Duration: ~1.5-2 hours

Group Size: Up to 30 students (may be split into smaller groups for certain areas)

Students receive a **private, extended experience** at APOPO's Visitor Centre, going beyond the standard public tour.

Includes:

- Introduction to Cambodia's landmine history and post-conflict recovery
- Interactive presentation by APOPO staff on global programs:

- Mine action
- Tuberculosis detection
- Wildlife trafficking detection
- Search & rescue innovation
- Environmental initiatives (HeroTREES syntropic farming, Minefield-to-Ricefield)
- Behind-the-scenes insight into APOPO's operations (areas not typically included in public tours, subject to operational availability)
- Live demo of our HeroRAT detecting a landmine
- Hold our beloved HeroRATs and photo opportunity!
- Opportunity for Q&A with staff



2. Sister Srey Café - Social Enterprise Breakfast/Lunch

Location: Siem Reap (City Centre)

Duration: ~1 hour

Students enjoy a **set meal at Sister Srey Café**, APOPO's social enterprise café where 100% of profits support humanitarian work. Can be either breakfast or lunch depending on tour operator logistics.

Experience highlights:

- Learn how social enterprises can sustainably fund NGO operations
- Visit the **Magawa memorial statue** - honoring APOPO's most decorated HeroRAT, who:
 - Detected over **100 landmines and explosives**
 - Cleared over **225,000 square meters of land**



- Was **awarded a gold medal** for exceptional bravery by the UK's PDSA (People's Dispensary for Sick Animals)

3. HeroRAT & HeroDOG Training Centre – Field Demonstration

Location: ~30 minutes from Siem Reap

Coordinates: 13.39501° N, 104.18266° E

Duration: ~2 hours

Students visit APOPO's training facility to see how our giant African pouch rats (HeroRATs)



and Belgian Malinois dogs (HeroDOGs) and are prepared for real-world deployment.

Includes:

- Live demonstrations of **HeroRATs and HeroDOGs** conducting detection exercises
- Explanation of training methodology and behavioral science
- Introduction to mine action strategies and land clearance processes
- Learn about how supporting technologies like drone mapping and data collection systems aid clearance work



- Opportunity to engage with trainers and field staff

4. CMAC Peace Museum – Historical Context

Location: ~25-30 minutes from Siem Reap

Duration: ~1-1.5 hours

A guided visit to the **Cambodia Mine Action Centre (CMAC) Peace Museum**, providing critical historical context.

Students will learn:

- The legacy of the Khmer Rouge and civil conflict
- The long-term impact of landmines on Cambodian communities
- National and international efforts in mine clearance

Why This Experience Is Unique

Unlike traditional educational visits, this program provides:

Direct exposure to active humanitarian work

Access to real operational environments and experts

A combination of science, technology and human stories

A clear connection between learning and **impact**

Certificate of Participation including a link to SDGs/curriculum depending on whether the



schools are IB/Cambridge/AP can be created.

<p><u>Contribution Structure</u></p> <p>USD \$250 per student</p> <p>Minimum Group Contribution: USD \$5000 (equivalent to 20 students)</p> <p><i>Student contributions directly support:</i></p> <ul style="list-style-type: none"><i>Humanitarian mine clearance operations</i><i>Training and deployment of detection animals</i><i>Community education and safety programs</i><i>Research and innovation in detection technologies</i>	<p><u>Group Structure & Logistics</u></p> <p>Group size: <30</p> <p><i>Groups may be rotated for certain activities</i></p> <p><i>Transport and scheduling to be arranged by tour operators</i></p>
--	--

For more information, please contact:

Emily Yu

Director of Partnerships, SE Asia



Mobile/WhatsApp : +852-6185-6512

Telegram/Wechat : emilysqu

emily.yu@apopo.org

www.apopo.org



ENVIRONMENTAL STEWARDSHIP WITH OCEAN RECOVERY ALLIANCE & NGO² BAMBOOSHOOT FOUNDATION



*Tonle Sap Lake Community & Environmental Stewardship
Life on Cambodia's "Inland Ocean"*



Program Overview

Students will take part in an immersive, hands-on environmental stewardship experience on Tonle Sap Lake, Cambodia's "Inland Ocean" is its largest freshwater ecosystem, and one of Southeast Asia's most vital sources of food, biodiversity, and livelihoods.

Through direct engagement with local communities, students will explore the environmental challenges facing the lake, particularly plastic pollution, and actively contribute to community-led solutions designed to protect water systems, wildlife, and human livelihoods.

This experience encourages cross-cultural exchange while building awareness of the interconnected relationship between environmental health, economic stability, and community resilience



One Day Experience

Guardians of the Tonle Sap: Community Conservation & Plastic Recovery

Location: Tonle Sap Lake - Kampong Phluk, Kampong Khleang, or Mechrey Village

Departing from and returning to Siem Reap

Duration: Half-day or full-day program (Morning, afternoon, or sunset sessions available)

Group Size: 4 - 45 participants

In Partnership With: Local Women's Paddling Committee, Local Fishermen's Association, Floating Restaurant Cooperative, Village High School Students

Experience Components

1. Welcome & Community Introduction

Students will be welcomed by the project team and introduced to the Tonle Sap ecosystem, often referred to as the "beating heart of Cambodia.

This opening session will explore:

- The **cultural and economic** importance of the lake
- The daily lives of **floating and stilted communities**
- The growing **environmental pressures** facing the region
- The role of **community-driven conservation** programs

Students will be provided with reusable bamboo collection bags, gloves, and paddling equipment to prepare for field activities.

2. On-the-Water Plastic Collection Expedition

Duration: ~1.5 hours

Group Size: Up to 40 students (may be split into smaller groups for certain areas)

Students will board traditional wooden boats led by members of the Local Women's Paddling Committee - community leaders who now play a central role in environmental protection efforts.

During the journey, students will:

- **Collect plastic waste** using nets and collection tools
- Learn about **fishing practices and daily livelihoods**
- Observe how **pollution affects both ecosystems and local economies**, and how our **Water Falling Festivals** and **Inland Ocean Festivals** have helped bring momentum to lakeside village improvements for water protection and **pride for the outdoors**
- Learn about our **Harvest Plastic and Clean Families Programs**, and why they work well, and can be replicated to other regions or countries

This hands-on activity transforms environmental learning into direct action.



3. Environmental Performance by Local Youth

"Angkor Roo - The Recycling Rooster"

Duration: ~25min

Students will attend a **live performance** created by local youth and developed by Ocean Recovery Alliance.

This **interactive performance** combines:

- **Movement and performance**
- **Environmental messaging**
- **Cultural expression**

The story illustrates the **environmental impact** of **plastic pollution** while encouraging responsible waste practices.

Following the performance, students will participate in a **Q&A session with the performers** and engage in group discussion.



4. Community Meal or Sunset Reflection

Duration: ~45min

Students will gather at a floating restaurant operated by the local cooperative.

This session includes:

- Introduction to zero-waste practices used by the restaurant
- Discussion about how environmental protection supports food security
- Sunset sessions allow students to reflect on the day's learning while observing the natural beauty of the lake environment



5. Fisherman's Propeller Challenge Workshop

Students will engage directly with **local fishermen** to understand how plastic pollution affects daily operations.

This hands-on demonstration includes:

- Learning how plastic becomes tangled in **boat propellers**
- **Practicing removal techniques** using real tools
- Discussing the **financial and operational impacts of pollution**

This activity highlights the real-world consequences of environmental neglect and emphasizes the importance of prevention.



6. Impact & Reflection

Before departure, students will observe the collected plastic being weighed and sorted for recycling or upcycling.

Each group will receive a digital **Tonle Sap Lake Guardian Certificate**, documenting the total volume of plastic collected during their participation.

Students will leave with a deeper understanding of:

- **Community-led environmental solutions**
- The shared responsibility of **environmental stewardship**
- The global relevance of **local conservation efforts**



Day Two Experience (Optional Extension)

Community Exchange & Cultural Learning on Tonle Sap Lake

Location: Alternative **Tonle Sap village community** (Selected to demonstrate diverse living conditions across the lake)

Duration: Full-day program

Program Overview

Day Two expands the learning experience through deeper **cultural engagement** and **environmental collaboration**.

Students will explore differences between lake communities, engage with local students, and participate in collaborative environmental action while learning about cultural traditions and **spiritual life connected to the lake**.



Experience Components

1. Community Welcome & Village Orientation

Students will be introduced to a second lake community with **distinct living conditions** and **environmental challenges**.

This session explores:

- Seasonal **water fluctuations**
- **Housing adaptations** across communities
- **Economic differences** between villages
- Shared **environmental concerns**

Students will compare observations from Day One to deepen understanding of regional diversity.



2. School Visit & Student Exchange

Students will visit a local school and meet peers from the community.

Activities include:

- Guided school tour
- Cultural exchange and group discussions
- Peer-to-peer learning sessions
- Question-and-answer dialogue with translation support

This interaction builds empathy, understanding, and shared learning between students from different backgrounds.



3. Community Clean-Up Collaboration

Duration: ~ 1.5 hours

Students will work in small teams alongside local students to conduct a village-wide plastic clean-up.

Activities include:

- Collecting plastic waste from designated zones
- **Sorting and recording** collected materials
- Discussing **sources** of waste and **reduction strategies**
- Reflecting on **environmental responsibility**

This **collaborative activity** reinforces teamwork and environmental awareness.



4. Lake Exploration & Ecosystem Learning

Duration: ~ 1.5 - 2 hours

Students will travel by boat to explore surrounding areas of the lake.

- During this journey, students will:
- Learn about Tonle Sap's **unique hydrological system**
- Observe **wildlife and aquatic habitats**
- Discuss the **ecological importance of wetlands**
- Explore **seasonal changes affecting biodiversity**

A simple local meal may be provided during this activity.

Optional supervised swimming may be permitted depending on safety conditions.



5. Cultural Visit: Temple & Spiritual Learning

Students will visit a local temple and learn about the **cultural and spiritual traditions connected to life on the lake.**

This session includes:

- Introduction to **Buddhist traditions**
- Temple **architecture and symbolism**
- Discussion of spiritual relationships to nature
- Reflection on **cultural heritage within Cambodian communities**



6. Optional Extension: Boeng Peariang Bird Sanctuary Visit

Depending on seasonal conditions and group interest, students may visit the nearby Boeng Peariang Bird Sanctuary.



Learning themes include:

- **Bird migration patterns**
- **Habitat conservation**
- **Biodiversity protection**
- **Wetland ecosystem preservation**

7. Final Reflection & Departure

At the conclusion of the program, students will gather for a final reflection session to discuss:

- **Key learning** outcomes
- **Environmental insights**
- Cultural experiences
- **Actions they can take** in their own communities

Students will leave with **strengthened awareness of environmental stewardship** and a deeper appreciation for the communities of Tonle Sap Lake.

For more information, please contact:

Sophal Sea – director.ngo2@gmail.com (+855-928-74274) in Siem Reap

Doug Woodring – doug@oceanrecov.org (+852-9020-3949) in Hong Kong

<p style="text-align: center;"><u>Contribution Structure</u></p> <p style="text-align: center;">USD \$250 per student</p> <p>Minimum Group Contribution: USD \$3,750 (equivalent to 15 students)</p> <p style="text-align: center;"><i>Student contributions directly support:</i></p> <p><i>Harvest Plastic and Clean Families Programs in lakeside villages</i></p> <p><i>Expansion of monthly village plastic collection activities</i></p> <p><i>Education and Awareness to village members via our Green Ambassadors of each village</i></p> <p><i>Develop a village reward program for plastic and fishing net recovery from boat propellers</i></p> <p style="text-align: center;"><i>Support “Angkor Roo the Recycling Rooster” performances in villages and schools in the region</i></p>	<p style="text-align: center;"><u>Group Structure & Logistics</u></p> <p style="text-align: center;">Group size: <40</p> <p><i>Groups may be rotated for certain activities</i></p> <p><i>Transport and scheduling to be arranged by tour operators</i></p>
--	--

COMMUNITY ENGAGEMENT WITH WE CARE CAMBODIA



Rural Community Engagement & Cultural Exchange

Program Overview

Students will participate in an **immersive rural community experience** designed to foster cultural **understanding, empathy, and meaningful engagement** between visiting students and local Cambodian youth.

Through **shared learning activities**, cultural interaction, and **guided exploration of rural village life**, students will gain insight into the daily realities, aspirations, and resilience of Cambodian communities.

This program provides a unique opportunity to witness the work of a grassroots Cambodian NGO and



understand how education and community support programs contribute to long-term development.

One Day Experience

Rural Life, Cultural Exchange & Community Learning

Location: Kol Thmey Community Centre; Dom Dek to Beng Melea Road 64, Siem Reap Province
(Departing from and returning to Siem Reap)

Duration: Half-day or full-day program

Group Size: 10–30 participants

Experience Components

1. Journey to Beng Melea Temple (morning)

Students will travel approximately 60 kilometers from Siem Reap to explore **Beng Melea** - an **ancient Angkorian temple** known for its partially restored ruins and jungle surroundings.

During this exploration, students will:

- Learn about the **Angkorian civilization** and its historical significance
- Observe **architectural techniques** and **ancient engineering**
- Explore how **heritage preservation** contributes to cultural identity
- Reflect on Cambodia's history



This activity provides historical context that supports later discussions about community life and cultural continuity.

2. Community Centre Welcome & Shared Lunch (midday)

Students will arrive at **Kol Thmey Community Centre** and be welcomed by staff and local students.

This session includes:

- Introduction to the mission and programs of We Care Cambodia
- Shared lunch at the community centre
- Orientation to community-based education initiatives

- Discussion about the **importance of educational access** in rural areas learn about the Angkorian civilization and its **historical significance**
- Observe architectural techniques and ancient engineering

This welcoming environment encourages open dialogue and cultural exchange.

3. Collaborative Learning with Local Students

Visiting students will participate alongside local Khmer students during scheduled English classes and group activities.

Activities may include:

- **Educational games and language exchange**
- Group **collaboration exercises**
- **Creative learning** activities
- Informal **peer-to-peer interaction**



These shared experiences foster mutual understanding and encourage confidence in cross-cultural communication.

4. Guided Village Walk (afternoon)

Local students will lead visiting students on a walking tour of the surrounding village.

During this experience, students will:

- Observe daily routines and village infrastructure

- Learn about transportation methods and livelihoods
- Gain insight into **rural living conditions**
- Discuss **environmental and social challenges** faced by communities

This student-led exploration encourages authentic engagement and shared learning.

4. Impact & Reflection

At the conclusion of the day, students will reflect on:

- Cultural similarities and differences
- The importance of **community support systems**
- The **value of education in creating opportunity**
- The **role of NGOs in supporting rural development**

Students leave with enhanced cultural awareness and a deeper understanding of community resilience.

Day Two Experience (Optional Extension) *Cultural Immersion, Outdoor Learning & Community Living*

Location: Kol Thmey Community Centre and Phnom Kulen National Park

Duration: Two-day immersive program with overnight stay

Program Overview

The two-day experience deepens engagement through **overnight community living**, cultural activities, **outdoor exploration**, and **shared experiences with local students**.

Students will participate in traditional activities, **explore sacred cultural landscapes**, and gain firsthand understanding of **rural Cambodian life**.



Experience Components

DAY ONE: CULTURAL EXCHANGES ANND COMMUNITY LIVING

1. Beng Melea Temple Exploration (morning)

Students begin the day with travel to Beng Melea Temple for guided exploration and cultural learning.

This session reinforces:

- Historical understanding
- Cultural awareness



- Appreciation for **heritage conservation**

2. Community Centre Activities (afternoon)

Following temple exploration, students return to Kol Thmey Community Centre for shared learning activities with local students.

Activities include:

- **Educational collaboration**
- Cultural exchange sessions
- **Interactive games and learning** exercises

These shared activities strengthen relationships between visiting and local students.

3. Khmer Cooking Workshop & Shared Dinner (late afternoon & evening)

Students will participate in a **traditional Khmer cooking session** led by community members.

During this activity, students will:

- Learn basic **Cambodian cooking techniques**
- Prepare **traditional dishes**
- Understand the importance of **local ingredients**
- **Share dinner together** as a community



This hands-on cultural activity strengthens understanding through shared experience.

4. Evening Campfire & Storytelling

Students will gather around a campfire for an evening of **storytelling and cultural exchange**.

Activities may include:

- **Traditional storytelling**
- Cultural sharing
- **Informal reflection**
- **Group bonding activities**

This relaxed setting encourages meaningful conversation and connection.

5. Overnight Community Stay

Students will stay overnight at the community centre in shared longhouse-style accommodation.

Facilities include:

- Individual sleeping areas with mosquito nets
- Bedding provided
- Access to bathroom and washing facilities

This overnight stay provides a realistic and memorable experience of rural community life.

DAY TWO: OUTDOOR EXPLORATION & CULTURAL HERITAGE

1. Village Breakfast & Morning Walk

Students will share breakfast with local students before participating in a guided village walk.

This session provides:

- Continued interaction with community members
- Observation of daily morning routines



- Opportunities for cultural discussion

2. Phnom Kulen Jungle Hike & Sacred Site Visit

Duration: ~ 3 hours

Students and local participants will travel to Phnom Kulen Mountain — a sacred site of historical and spiritual importance.

During this hike, students will:

- Trek through **forest landscapes**

- Visit **Buddhist pagodas**
- Learn about spiritual traditions
- Observe **Angkorian ruins in natural settings**

At the summit, students will experience:

- A **scenic waterfall**
- **Sacred river formations**
- Opportunities for **group reflection**



A picnic lunch will be shared at the site.

3. Final Reflection & Departure

Before returning to Siem Reap, students will participate in a closing reflection session.

This discussion will focus on:

- Cultural understanding gained
- **Personal insights from community engagement**
- **Lessons learned** through shared experiences
- Actions students can take to **promote global citizenship**

Students leave with **strengthened cultural awareness**, deeper empathy, and **meaningful connections** with the community.

<p><u>Contribution Structure</u></p> <p>USD \$250 per student</p> <p>Group Size 10-30</p> <p><i>Accommodation costs at the village and all meals. Funding transport and meal costs for local students to attend Kulen Hike. Directly supporting the community programs at the Kol Thmey Community centre</i></p> <p><i>NB: This contribution fee does not cover the temple entrance fee nor Kulen Mountain tourist fee.</i></p>	<p><u>Group Structure & Logistics</u></p> <p>Group size: <30</p> <p><i>Groups may be rotated for certain activities</i></p> <p><i>Transport and scheduling to be arranged by tour operators</i></p>
--	--

For more information, please contact:

Mongkheang

Email: mongkheang@wecarecambodia.org

WhatsApp: +855-70-744-777

Greg Ladner

Email: greg@wecarecambodia.org

WhatsApp: +852-9619-7294

