



渠務署

Drainage Services Department

REVITALIZATION OF

# 活化翠屏河

TSUI PING RIVER



一起進入綠化河道走廊之旅

Let's Get into the Journey of Green River Corridor



從「河」 IN THE BEGINNING 說起

為配合「起動九龍東」計劃及《2017年施政綱領》有關活化明渠的倡議，渠務署正透過環境、生態及園景美化等改善工程，將長約一公里、毗鄰民居及工商業區、有逾50年歷史的觀塘敬業街明渠活化成翠綠且具活力的「翠屏河」。加強明渠防洪功能之餘，改善河道與周邊地區的連接，為公眾提供珍貴的河畔公共空間及近水休憩設施。

To complement "Energizing Kowloon East" and the initiative on nullah revitalization put forward in the 2017 Policy Agenda, the Drainage Services Department (DSD) is turning the current 1 km-long King Yip Street Nullah, which has been flowing over 50 years adjacent to residential, industrial and commercial community, into a green and vibrant Tsui Ping River through environmental, ecological and landscape upgrading works. Besides strengthening the flood protection capability, the Tsui Ping River aims to enhance the connectivity within the district, provide precious riverside public space and riverine amenity for the community.

或許大家從沒對這條明渠抱有幻想。正因如此，我們決心為翠屏河注入活力與生命力，讓大家相信：**這裡，仍然會有想像。**

You probably never had much to imagine for this dull nullah. Yet, we are determined to inject energy and vitality into the Tsui Ping River: **IMAGINATION NEVER ENDS.**

綠化河畔走廊 Green River Corridor

配合「易行九龍東」的概念，連繫周邊民居、工商業區及區內多個康樂設施。

Tallying with the concept "Walkable Kowloon East", Tsui Ping River will link up the surrounding residential buildings, industrial and commercial areas and various leisure and recreational facilities in the district.



活化河道 Revitalizing the River

通過豐富水景和氛圍活化明渠。使用天然物料鋪設部分河床及栽種水生植物，改善明渠外觀和生態環境。

Enriching its waterscape and ambience; enhancing the appearance and habitat by resurfacing part of the nullah bed with natural materials and introducing aquatic plants.

沿河行人通道



Riverside Walkway

跨河橋道



Cross River Walkway



IMAGINATION

跨河橋道



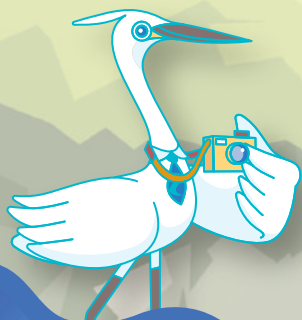
Cross River Walkway

人工濕地



Engineered Wetland

特色逐個捉 HIGHLIGHTS



跨河橋道



Cross River Walkway

智能水閘和瀑布



Smart Water Gate and Waterfall

人工浮島



Floating Pontoon

減低水浸風險 Reducing Flood Risk

挖深現有河道、遷移現時明渠上的行人天橋斜道，加強排洪能力。

Deepening the existing channel and relocating the existing footbridge ramp above the nullah to improve flood conveyance capability.

園境平台



Landscape Deck

營造活力公共空間 Fostering a Vibrant Public Space

河道與休憩設施一體化，使翠屏河成為市民欣賞河景和進行休閒活動的新地標。

Integrating the river course and recreational facilities makes Tsui Ping River a new landmark for riverside scenic views and leisure activities.





# 項目進度 及你的參與

## PROJECT STATUS AND YOUR PARTICIPATION



疲憊的上班族對著瀑布細聽流水；  
老友記安坐河邊，上演「老人與河」；  
夜幕下三五知己在人工浮島談天說地；  
熱血跑友以汗水與流水競賽！

**這就是我們的想像！**

### Imagine!

Relaxing next to the waterfall after a long-day at work;  
A grand old couple gazing at the slow-flowing river;  
Meeting up with friends at the floating pontoon;  
Runners racing against the flowing water!

項目的成功需要你的參與。在完成兩階段的公眾參與活動後，活化翠屏河的工程已於2020年7月展開，預計於2024年完成。展望未來，我們將定期出版季度通訊，細說翠屏河的點點滴滴，繼續與你從「河」說起。

Your participation in our Project is indispensable for its success. Following the two-stage public engagement, the construction works commenced in July 2020 and scheduled for completion in 2024. Looking into the future, quarterly newsletters will be published and more interesting stories are yet to come.



工程合約編號  
Contract No.

DC/2019/08

工程熱線  
Hotline

6088 9002

電郵  
Email

pro@dc201908.com.hk

網頁  
Website

www.tsuipingriver.hk

你的意見  
讓我們做得更好  
WE VALUE  
YOUR VOICE